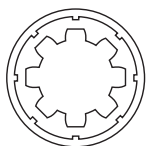


# Belt Drive Actuators

M40-06 Series

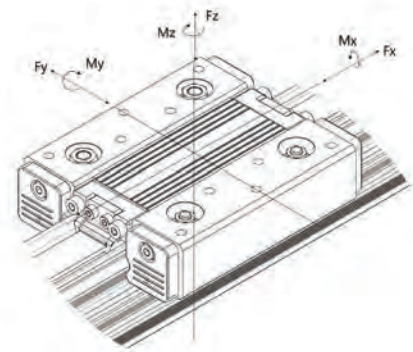


**MYOSTAT MOTION CONTROL INC.**

www.myostat.ca  
info@myostat.ca  
+1 905 836 4441

Technical Data				
	Unit		Value	
Max. Speed	m/s	ft/s	4	13.12
Max. Acceleration	m/s <sup>2</sup>	ft/s <sup>2</sup>	15	49.21
Nominal Input Torque	Nm	ft-lb	2.3	1.7
Positional Repeatability	+/- mm	+/- Inch	0.05	0.002
Pitch	mm	Inch	75	2.953
Belt Width	mm	Inch	15	0.591
Toothed Belt	HTD3M			
Max. Belt Expansion	%		0.18	
Toothed Belt Tension			150	33.72
Fx Max.	N	lbf	100	22.48
Fy Max.			50	11.24
Fz Max.			60	13.49
Mx Max.			3	2.21
My (standard)	Nm	ft-lb	5	3.69
Mz (standard)			4	2.95
Mass for first meter	Kg	lb	2.2	4.84
Mass per additional meter			1.9	4.18

RL - Rail Length	300 - 3600 [11.811-141.732]
L - Overall Length	RL +106 [4.173]
S - Stroke	RL - (100 [3.937] x Number of Carriages)



## Naming Convention

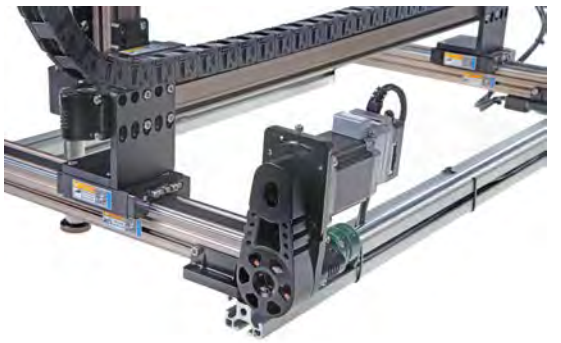
M40-06-□-□-□□□□

Frame Size    Fz Max.    Number of Carriages    Shaft Position    Stroke

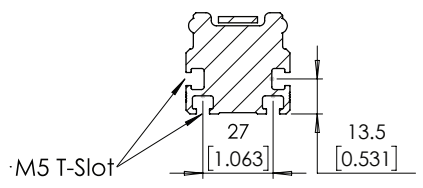
Shaft Position	
1	5
2	6
3	7
4	8



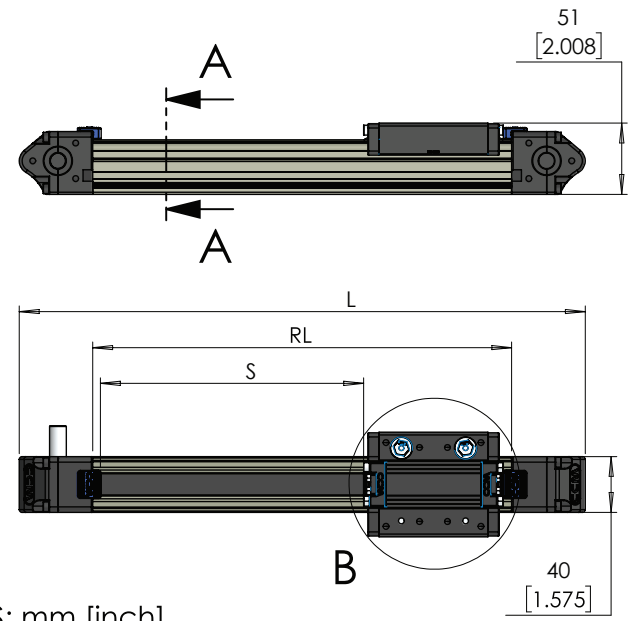
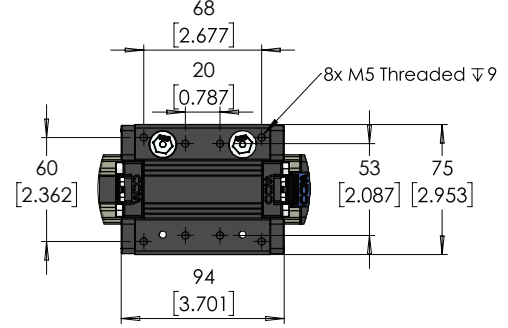
Available with Inline Motor Mount or 2.5:1 or 2:1 belt reduction



### SECTION A-A

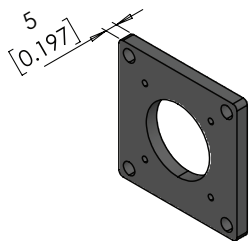


### DETAIL B

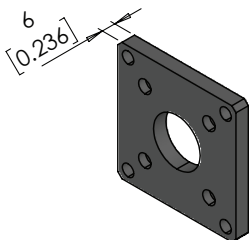
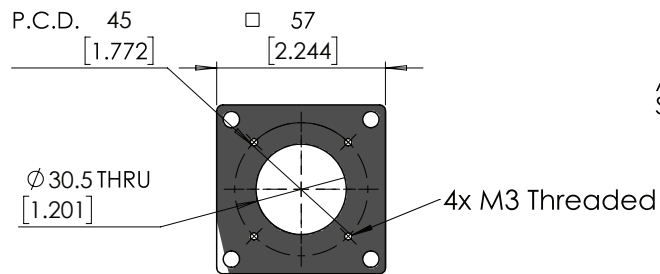


UNITS: mm [inch]

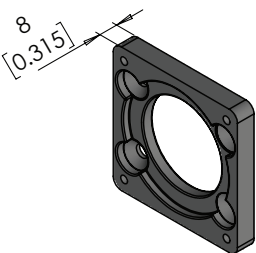
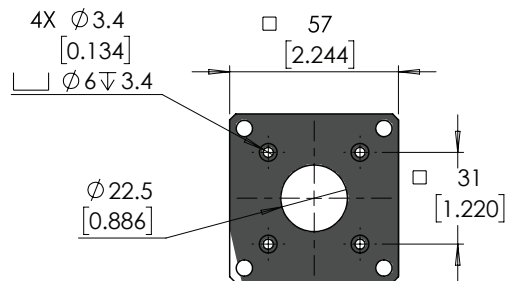
Unless otherwise specified, tolerance to be: CNS 4018 IT 14 Linear measures 0.5-3 ±0.1 3-6 ±0.1 6-30 ±0.2 30-120 ±0.3 120-315 ±0.5	DRAWN	M.Reynolds	04-10-2018	DO NOT SCALE DRAWING	DIMENSIONS ARE METRIC
	CHECKED	M.Dank	04-10-2018	TITLE: M40-06 Series Belt Driven Actuator	
	ENG APPR.	M.Dank	04-10-2018		
PROPRIETARY AND CONFIDENTIAL THE INFORMATION CONTAINED IN THIS DRAWING IS THE SOLE PROPERTY OF MYOSTAT MOTION CONTROL INC. ANY REPRODUCTION IN PART OR AS A WHOLE WITHOUT THE WRITTEN PERMISSION OF Myostat Motion Control Inc.				PRT. NO.	REV
				M40-06-□-□-□□□□	2.1
				WEIGHT: -	SHEET 1 OF 3



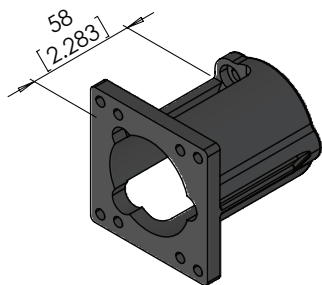
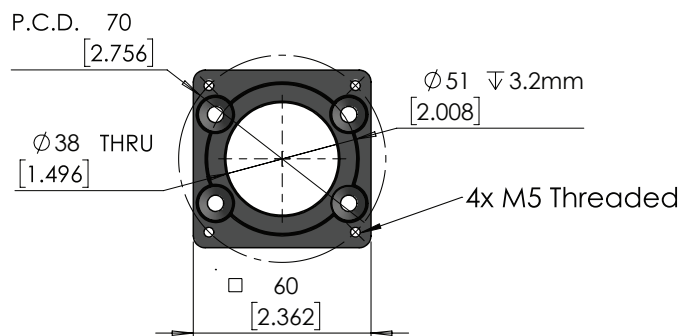
M4045-01917  
40 mm Servo Motor Adapter



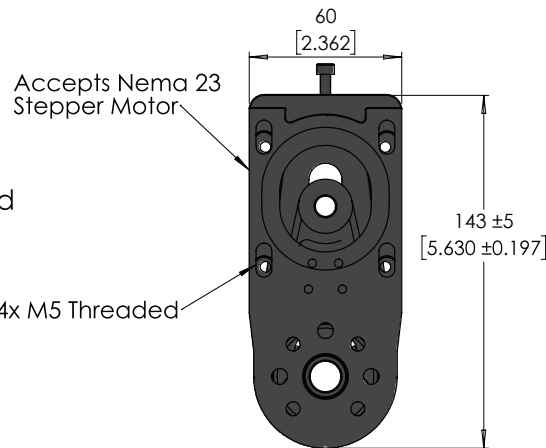
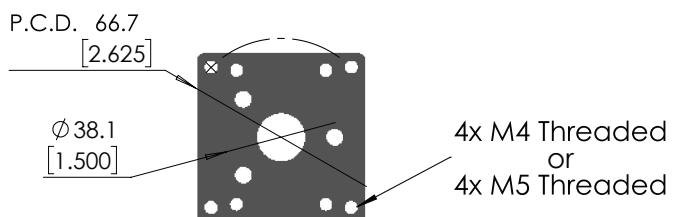
M4045-17000  
Nema 17 Motor Adapter



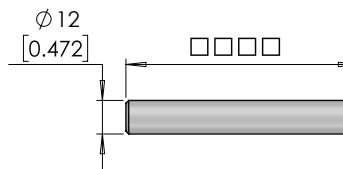
M4045-01917  
60 mm Servo Motor Adapter



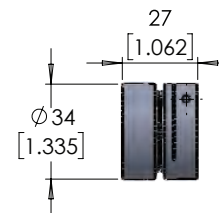
M4045-M23-M4  
M4045-M23-M5  
Nema 23 In-line Motor Bracket



SR1-2  
SR1-2.5  
Belt Reduction Available in 2:1 and 2.5:1




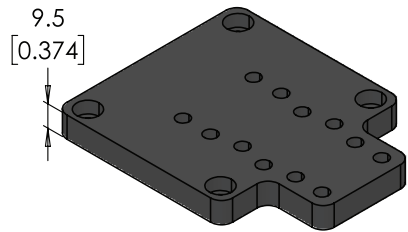
SFT-12-□□□□  
12mm Shaft Variable Length



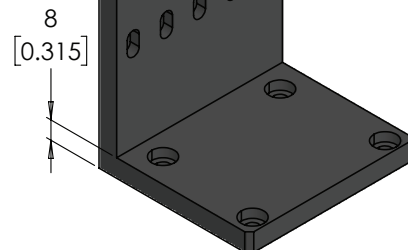
PML34-12-□□  
12 mm Coupling with Variable Input

UNITS: mm [inch]

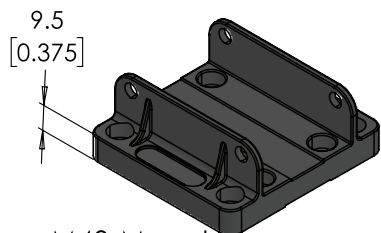
Unless otherwise specified, tolerance to be: CNS 4018 IT 14 Linear measures 0.5-3 ± 0.1 3-6 ± 0.1 6-30 ± 0.2 30-120 ± 0.3 120-315 ± 0.5	DRAWN	M.Reynolds	04-10-2018	DO NOT SCALE DRAWING DIMENSIONS ARE METRIC	TITLE: <h1>M40-06 Accessories</h1>
	CHECKED	M.Dank	04-10-2018		
PROPRIETARY AND CONFIDENTIAL THE INFORMATION CONTAINED IN THIS DRAWING IS THE SOLE PROPERTY OF MYOSTAT MOTION CONTROL INC. ANY REPRODUCTION IN PART OR AS A WHOLE WITHOUT THE WRITTEN PERMISSION OF Myostat Motion Control Inc.				PRT. NO. M40-06-□-□-□□□□	
 Myostat Motion Control Inc. +1 905-856-4441 www.myostat.ca				REV 2.1	
				WEIGHT: -	SHEET 1 OF 3



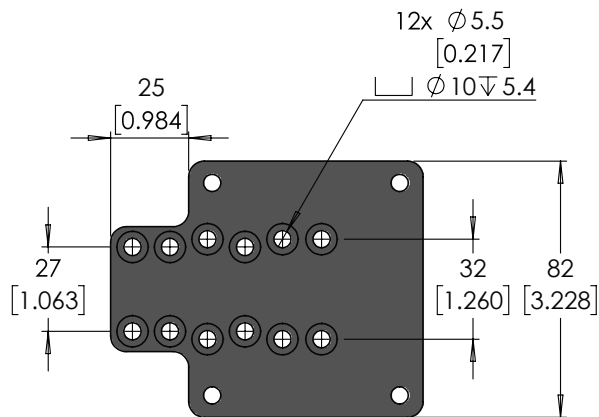
M40-T-Mount  
2 Axis Mounting Bracket



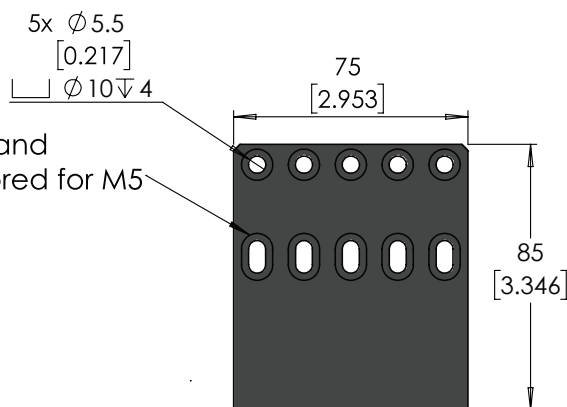
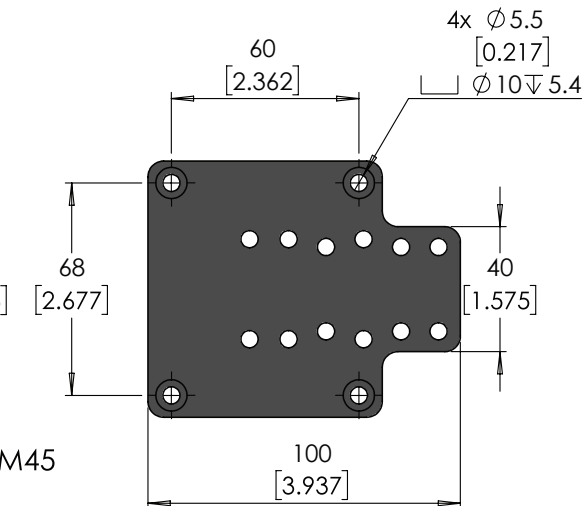
M40-RA-Mount  
Right Angle Rail Mount



M40-Mount  
M40 Rail Mount

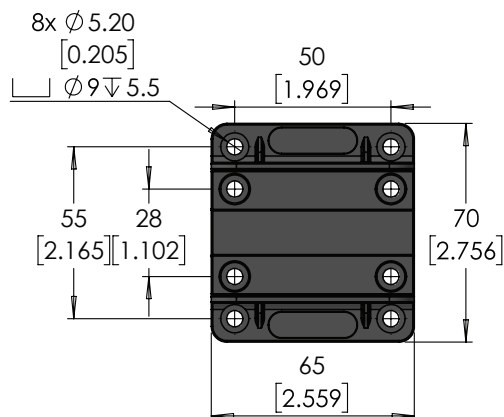
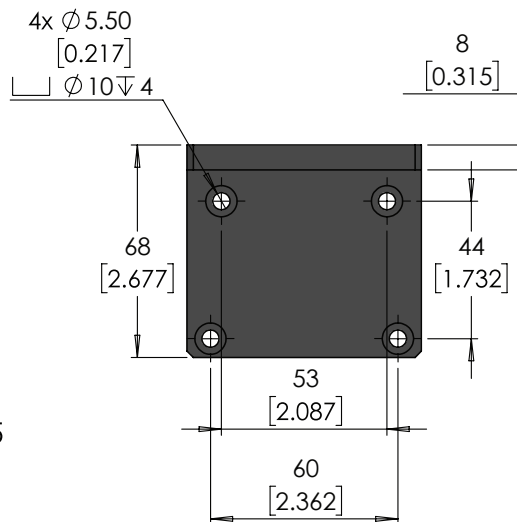


Offset holes allow for mounting of either M40 or M45




5x Slotted and  
Counterbored for M5

Slots allow for mounting of either M40 or M45



UNITS: mm [inch]

Unless otherwise specified, tolerance to be: CNS 4018 IT 14 Linear measures 0.5-3 ±0.1 3-6 ±0.1 6-30 ±0.2 30-120 ±0.3 120-315 ±0.5	DRAWN	M.Reynolds	04-10-2018	DO NOT SCALE DRAWING	DIMENSIONS ARE METRIC
	CHECKED	M.Dank	04-10-2018	TITLE: M40-06 Series Belt Driven Actuator	
ENG APPR.	M.Dank	04-10-2018	PRT. NO. M40-06-□-□-□□□□		
PROPRIETARY AND CONFIDENTIAL THE INFORMATION CONTAINED IN THIS DRAWING IS THE SOLE PROPERTY OF MYOSTAT MOTION CONTROL INC. ANY REPRODUCTION IN PART OR AS A WHOLE WITHOUT THE WRITTEN PERMISSION of Myostat Motion Control Inc.			 Myostat Motion Control Inc. +1 905-856-4441 www.myostat.ca		REV 2.1
			WEIGHT: -		SHEET 1 OF 3

# Pre-Configured Gantry Styles

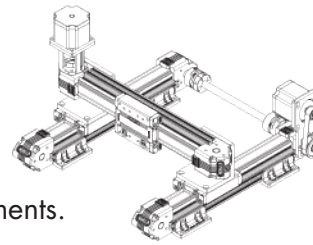
Please reference the gantry style number, along with required strokes and motors or motor mounts. Additional modifications or customization are available.

Gantries can be supplied with or without cable tracks and cabling.

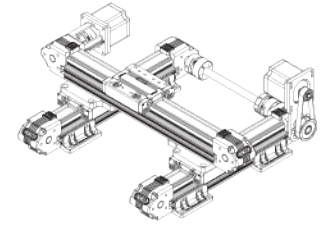
Some configurations are limited to specific frame sizes.

Our engineers can help pick the right combination based on your load and speed requirements.

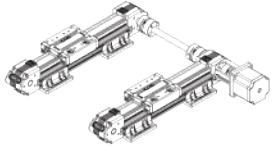
1



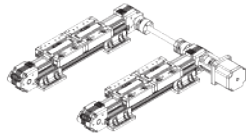
2



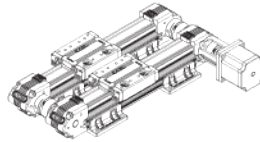
3



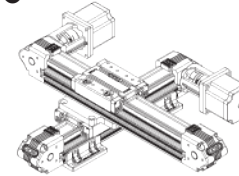
4



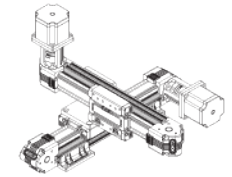
5



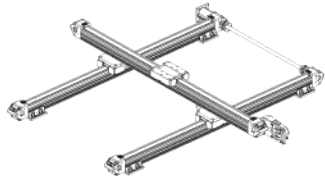
6



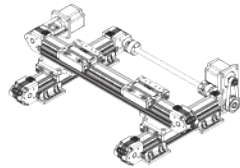
7



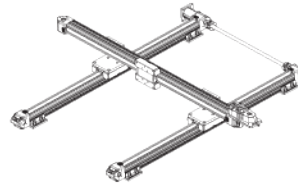
8



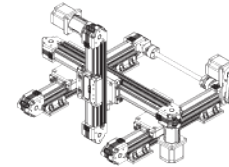
9



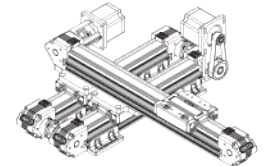
10



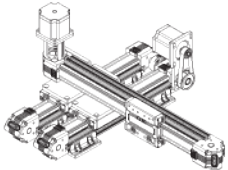
11



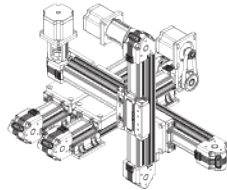
12



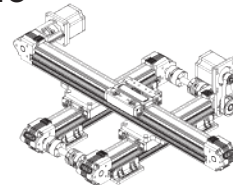
13



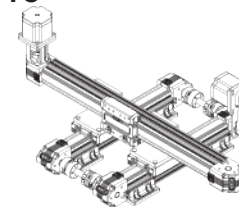
14



15



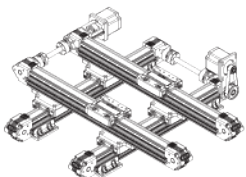
16



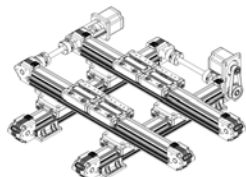
17



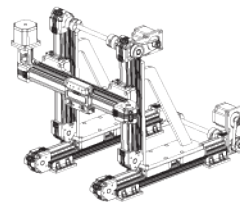
18



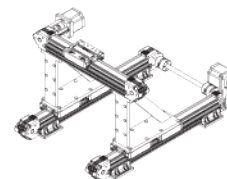
19



20



21



22

